

Upcoming Events

April

JPRO Fleet Night: April 30



Vendor Support Days

March

Dorman/Grote: March 4-6

Bendix: March 19 and 20

April

Horton / Seats Inc. / Donovan: April 16-18

May

Mascot: May 13-20

Questions?

Contact your Tom Nehl Outside Parts Salesman

Emory Stephens	904.389.3653x1151
Bert Brown	904.424.8114
Alex Lazic	904.389.3653x1153
Wayne Doty	904.389.3653x1154
Paul Hatmaker	904.855.2599
Moe Albritton	904.389.3653x1157
Mark Roberts	904.424.4831



Scan to receive deals and event info by email!



TomNehlTruckCompany



@TomNehlTrucks



@TomNehlTrucks

www.tomnehl.com

Serving you from across Northeast Florida / Southeast Georgia



417 Edgewood Ave. S
Jacksonville, FL 32254
904.389-3653

383 SW Arrowhead Ter.
Lake City, FL 32024
386.755.9527

708 Francis St.
Waycross, GA 31503
912.283.7473



5040 University Blvd. W.
Jacksonville, FL 32216
904.861.0779



480 Edgewood Ave. S.
Jacksonville, FL 32205
904.861.0740



417 Edgewood Ave. S
Jacksonville, FL 32254
904.389.3653



Tom Nehl Exclusive Parts Special: Webb Vortex Brake Drum

Up to 25% longer life!



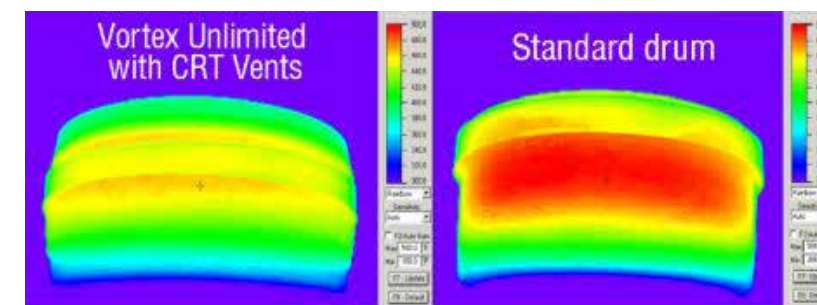
\$139.99
Special

The ultimate low-temperature, long-life brake drum with Cool Running Technology

- Longer life and patented wear indicator saves you time and money on labor.
- Can be used on any standard-duty cast brake drum application.
- Made in the USA!

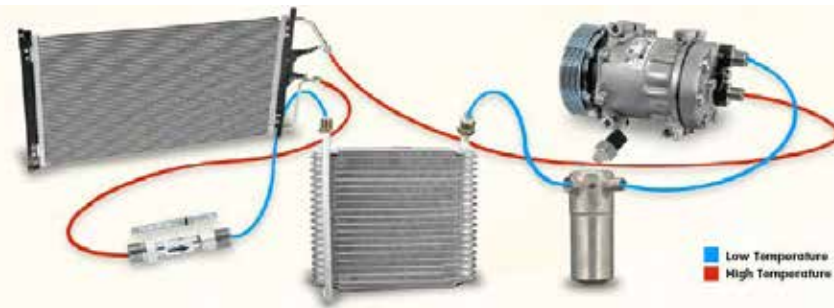
WEB77528B Steering Axle 15x4 Brake Drum
Cross reference: Conmet 10001783, 107507
Gunite 3721AX, Motor Wheel 88114B
(Stemco)

10% cooler operating temperatures



The Summer Heat Is Coming: Is Your A/C System Ready?

Proper A/C system performance is achieved with many components working together to provide cab comfort for the driver and passengers. The item that receives the most attention is the compressor. The compressor operates as the "pump" of the system, keeping the refrigerant circulating and increasing the refrigerant's pressure. All compressors have two sides: suction and discharge. The refrigerant is drawn into the compressor's suction side as a cold - low pressure vapor and then is compressed, thus raising the refrigerant pressure and temperature. The high pressure - high temperature vapor refrigerant is then pumped out of the compressor's discharge side to the condenser. As the compressor moves the refrigerant through the system, the refrigerant oil also moves with the refrigerant.



Typical Orifice Tube/Accumulator A/C System

Most Common Causes of Compressor Failure:

1. Low refrigerant charge
2. Leaks with the system
3. Contamination in the system
4. Lack of lubrication
5. Clutch failure due to system failure
6. Blockage or restriction within the system
7. Insufficient condenser cooling

We Proudly Carry



ROAD CHOICE
TRUCK PARTS

A/C Parts

PETERBILT 2010-2018 384, 386, 388, 389; 587

RC ACC3609 SUPER HEAVY DUTY
OE# F69-6003-122
- Clutch: 6 groove, 125mm
- Head: GSA
- Mount: Direct
- Sanden #4376

RC RD11108
OE# F37-6009
- Size: 3" x 11"
- Pad Manifold Fittings

RC EV01210
OE# F90-6001
- Hose Side
In: #6 Female O'ring
Out: #10 Female O'ring
- Evaporator Suction Side
In: #8 Female O'ring
Out: #8 Female O'ring
- Rating: 2 ton w/bypass
- M10, M12 Ports

INTERNATIONAL 2010-2018 PAYSTAR 5600, 5900; 9900I

RC ACC4476
OE# 3808548-C1
- Clutch: 8 groove, 119mm
- Head: 4347
- Mount: Direct
- Sanden #4720

RC RD12415
OE# 1693117-C1, 2000821-C1
- Size: 3" x 10"
- In: 11/16" Female O'ring
- Out: 3/8" Female O'ring
- Top Sight Glass
- Pressure Relief Valve
- 16mm Service Port
- R134a Only

RC EV01230
OE# 2501794-C92
- Hose Side
In: #6 Flange
Out: #10 Flange
- Evaporator Suction Side
In: #8 Flange
Out: #8 Flange
- Rating: 2 ton,
- M10, M12 Ports

KENWORTH 2012-2018 T680, T800

RC ACC4503 SUPER HEAVY DUTY
OE# F69-1014
- Clutch: 8 groove, 130mm
- Head: 4577
- Mount: Direct
- Sanden #4006, 4146

RC RD12325
OE# K251-571
- Size: 3" x 10"
- In: 3/8" Female O'ring
- Out: 3/8" Male O'ring
- Side Sight Glass
- Moisture Indicator

RC EV01025
OE# 540446BSM
- Hose Side
In: #6 Female O'ring
Out: #10 Female O'ring
- Evaporator Suction Side
In: #8 Female O'ring
Out: #8 Female O'ring
- Rating: 2 ton
- M10, M12 Ports



While supplies last. Nationwide limit.



\$5 Off Brake Shoe Kits

Includes 4707, 4515, 4518, and other common numbers



Promo code: LECG4AQ4XV
Expires 3/31/2019



Promo code: G54PRT6G66
Expires 3/31/2019

\$30 off Eaton Clutches

Promo code: QL8RW87TWE
Expires 3/31/2019
SP30970182
SP30892582



\$4 off Alliance Brake Drums

Promo code: SDC38TWZ7D
Expires 3/31/2019

Alliance	Cross Reference
ABP N42A1657B	3600AX, 66864B
ABP N42A1658625B	3807AX, 66854B
ABP N42A1657NB	3600A, 66864
ABP N42A154B	3800X, 3726X
ABP N42A1657VB	3922X



Tom Nehl In-Store Deals

Walk-in prices listed, account prices even lower!



Maxxima LED Work Lights
\$59.99
MEP 81000WL



Exide 750CCA Battery
\$59.99 exchange
EXI PX31750C702



Imperial Mini Fuse Kit
\$10
81401